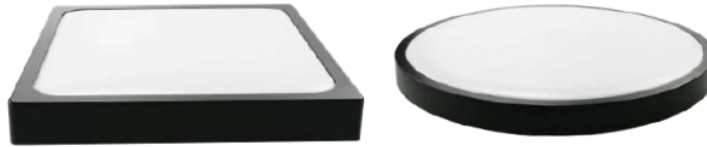


INSTALLATION INSTRUCTION LED DOME LIGHT



**IP44
RATING**



**SPHERE
360°
STAYS BRIGHT**



**2 YEARS
WARRANTY***

TECHNICAL DATA:

MODEL	WATTS	LUMENS	BEAM ANGLE	BODY TYPE	TOTAL CURRENT	LUMEN PER WATTS	INPUT POWER	SHAPE	DIMENSION (LxWxH)
VT-8618	18W	1800LM	Sphere 360°	PP+PMMA	100mA	100lm/w	AC:220-240, 50/60Hz	ROUND	∅225x55mm
								SQUARE	225x225x60mm
VT-8624	24W	2400LM	Sphere 360°	PP+PMMA	170mA	100lm/w	AC:220-240, 50/60Hz	ROUND	∅295x55mm
								SQUARE	295x295x65mm
VT-8630	30W	3000LM	Sphere 360°	PP+PMMA	140mA	100lm/w	AC:220-240, 50/60Hz	ROUND	∅420x55mm
								SQUARE	420x420x65mm

This product contains a light source of energy efficiency class <F>', where <F>'shall be replaced by the energy efficiency class of the contained light source.

INTRODUCTION & WARRANTY

Thank you for selecting and buying V-TAC product. V-TAC will serve you the best. Please read these instructions carefully before starting the installation and keep this manual handy for future reference. If you have any another query, please contact our dealer or local vendor from whom you have purchased the product. They are trained and ready to serve you at the best. The warranty is valid for 2 years from the date of purchase. The warranty does not apply to damage caused by incorrect installation or abnormal wear and tear. The company gives no warranty against damage to any surface due to incorrect removal and installation of the product. The products are suitable for 10-12 Hours Daily operation. Usage of product for 24 Hours a day would void the warranty. This product is warranted for manufacturing defects only.

WARNING:

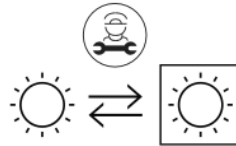
- Please make sure to turn off the power before starting the installation.
- Installation must be performed by a certified person.
- The light source of this luminaire is not replaceable, when the light source reaches its end of life the whole luminaire should be replaced.
- For Indoor use only
- If the external flexible cable or cord of this luminaire is damaged, it shall be exclusively replaced by the manufacturer or his service agent or a similar qualified person in order to avoid a hazard.
- Method of attachment of the cable or cord such that any replacement can only be made by the manufacturer, his service agent or similar qualified person.



This marking indicates that this product should not be disposed of with other household wastes.



Caution, risk of electric shock.



Replaceable light source
by a professional



ATTENTION!

Do not look directly at LED light beam. Product can only be supplied by rated voltage or voltage within the range provided. It's forbidden to use the product with damaged protective cover. Product must not be used in unfavorable conditions, e.g. dust, water, moisture, vibrations, explosive air atmosphere, fumes, or chemical fumes, etc. In the area of strong electromagnetic interference, the functioning of the product may be disrupted.

USAGE GUIDELINES / MAINTENANCE

Any maintenance work must be performed when the power supply is cut off and the product has cooled down. Clean only with soft and dry cloths. Do not use chemical detergents. Do not cover the product. Ensure free air access. Product may heat up to a higher temperature.

MOUNTING:

Read the manual before mounting. Mounting should be performed by a qualified electrician. Exercise caution. Product has a protective contact /terminal. Failure to connect the protective lead may lead to electric shock. Mounting diagram: see pictures. Check for proper mechanical fastening and connection to electrical power prior to first use.

INSTALLATION INSTRUCTION:

- Switch Off the Power Before Starting the Installation.
- Twist and remove the cover (Ref Image Part 2)
- Drill a hole in the ceiling to fix the light using screws (Ref Image Part 3)
- Connect the wires (Ref Image Part 4) before fixing the light using screws on the ceiling.
- Twist and lock the cover to the light (Ref Image Part 5)
- Switch ON the power and test the light.

INSTALLATION DIAGRAM:

